

PRIME | Understanding Disparities in Preventive Services for Patients with Mental Illness - Prevention and Risk in Mental Health

- *Term: 9/30/2012 – 8/31/2017*
- *Grantee: Kaiser Permanente Northwest Center for Health Research*
- *Sub-recipient: OCHIN, Inc.*
- *Funding Agency: National Institutes of Health/National Institute of Mental Health*

The goal of this study is to identify modifiable factors that affect preventive service use among people with serious mental illnesses. The study will seek to understand the underlying factors at the patient, provider, and clinic levels that may affect preventive service provision, as well as to identify the extent in which people with serious mental illnesses receive age- and gender-appropriate preventive services in the OCHIN and Kaiser settings.

Potential Impact:

Input from OCHIN clinicians and patients is key to identifying modifiable factors that will improve the delivery and uptake of preventive services for individuals with serious mental illness.

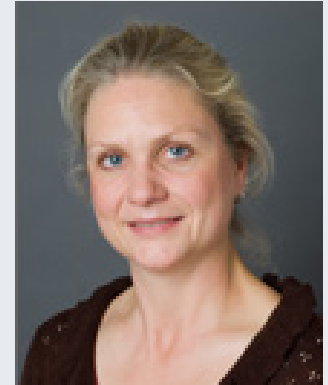
Organizations Involved:

Clinician Surveys

- AIDS Resource Center Wisconsin
- Alliance Medical Center
- Benton County Health Services
- Cascades East Family Medicine/Sky Lakes
- Cincinnati Health Department
- Clackamas County Health Centers
- Coastal Family Health Center
- Cowlitz Family Health Center
- Klamath Health Partnership
- La Clinica
- La Pine Community Health Center
- Monterey County Health Department
- Mosaic Medical
- Multnomah County Health Department
- Neighborhood Family Practice
- Neighborhood Health Centers
- OHSU Family Medicine at Richmond
- OHSU Family Medicine at Scappoose
- One Community Health
- Open Door Community Health Centers
- Progressive Community Health Center
- Roanoke Chowan Community Health Center
- Rogue Community Health
- Santa Cruz County Health Services
- Tillamook County Health Department
- Virginia Garcia Memorial Health Center
- Waterfall Community Health Center
- Winding Waters Clinic, P.C.

Patient Interviews

- Clackamas County Health Centers
- Neighborhood Health Centers
- OHSU Family Medicine at Richmond
- Virginia Garcia Memorial Health Center



Carla A. Green, PhD, MPH
Principal Investigator



Christine Nelson, RN, PhD
OCHIN Site Investigator